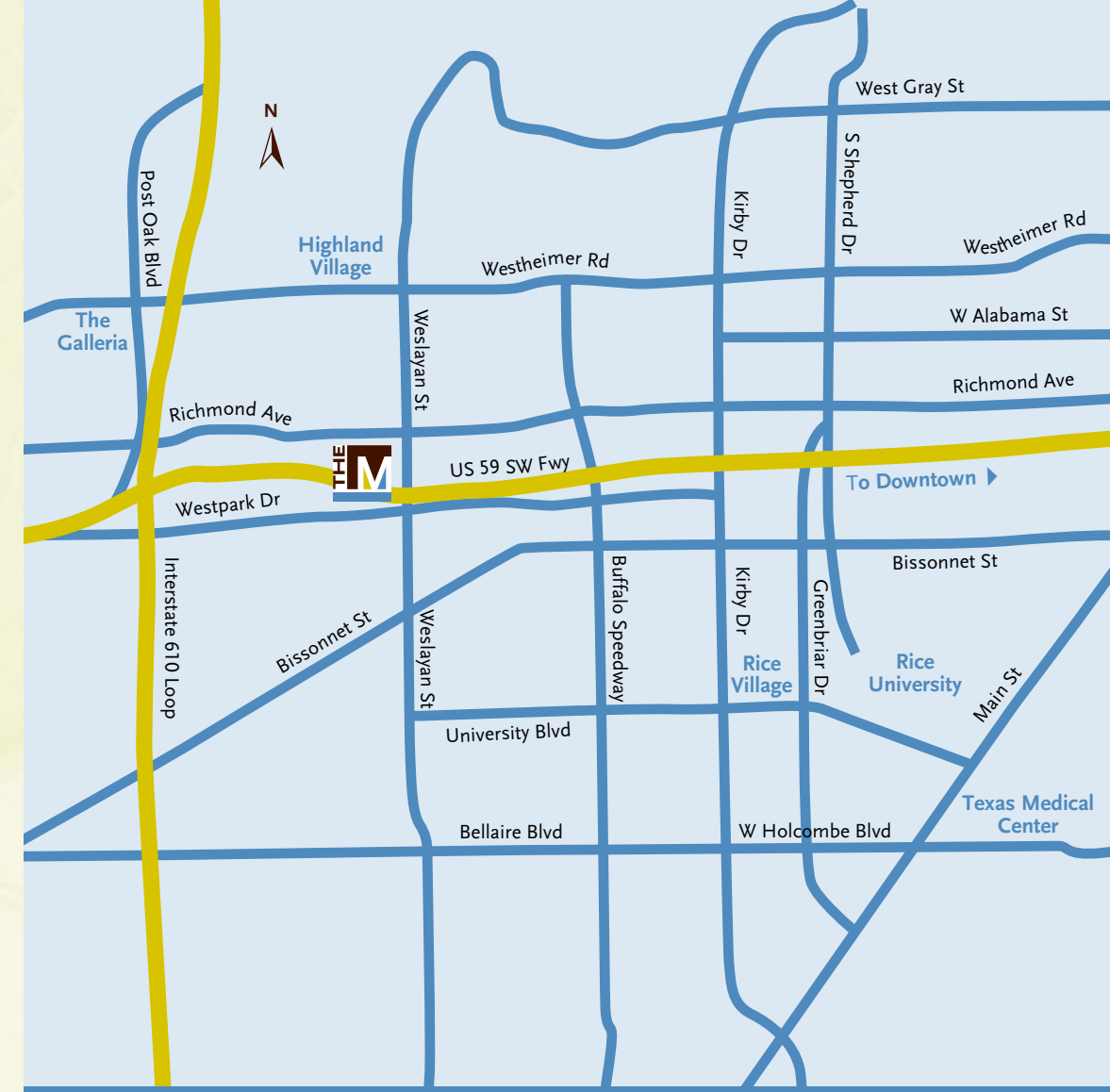
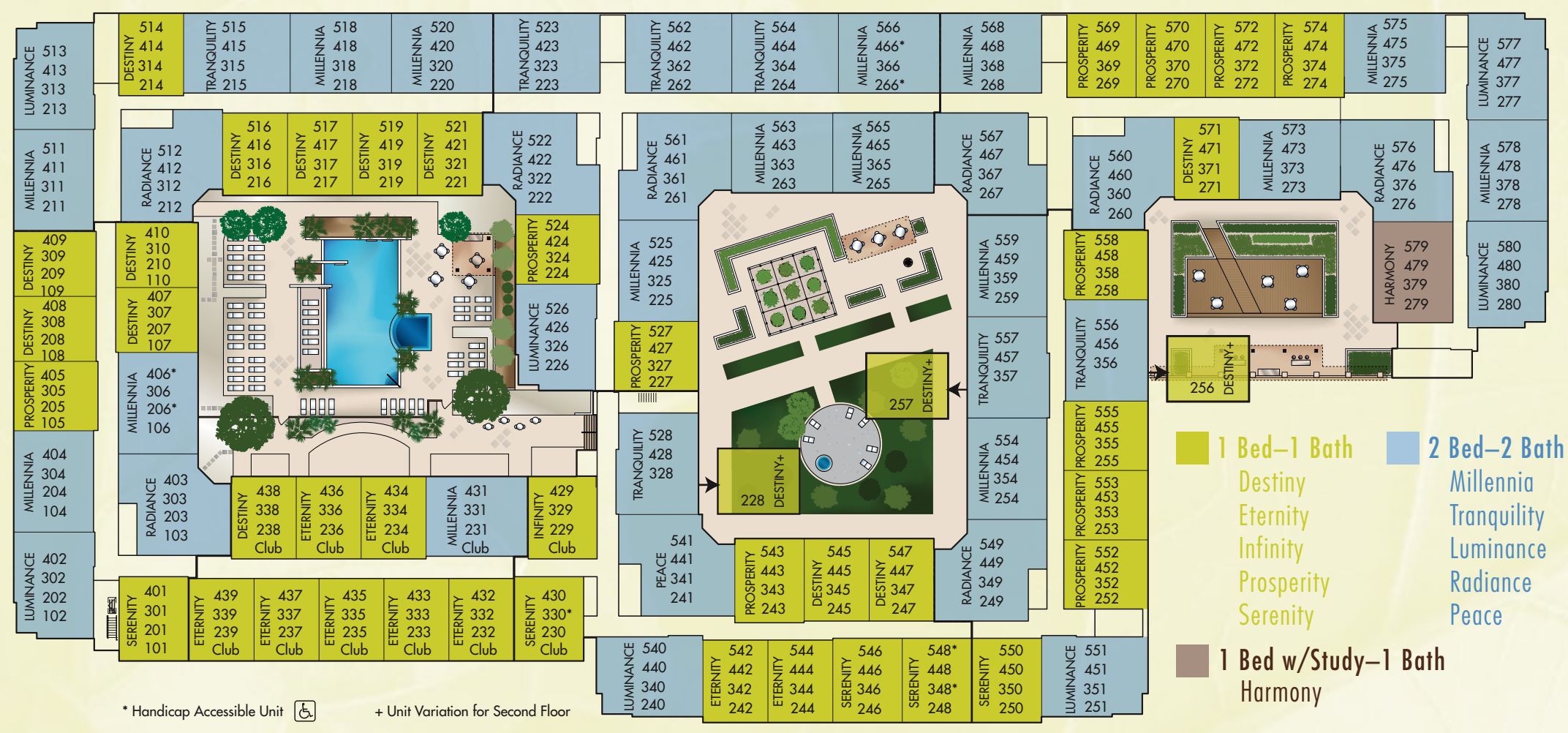


The Millennium Greenway represents the best in leading-edge living – lightning fast Internet connections in key rooms and common areas, high-tech athletic centers, and stylish contemporary architecture. With a wide variety of décor options – from the casual elegance of a ground-floor urban contemporary home to the ultimate sophistication of a top-level penthouse – you can choose an apartment home that reflects your personal style.



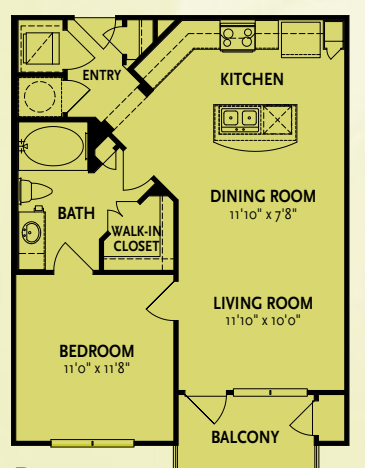
EXPERIENCE A NEW ERA IN URBAN LIVING

THE **MILLENNIUM**
GREENWAY

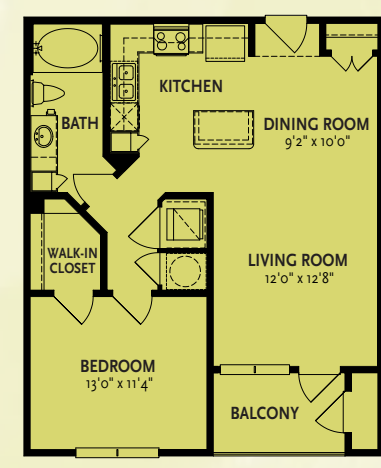


- 1 Bed-1 Bath
Destiny
Eternity
Infinity
Prosperity
Serenity
- 2 Bed-2 Bath
Millennia
Tranquility
Luminance
Radiance
Peace
- 1 Bed w/Study-1 Bath
Harmony

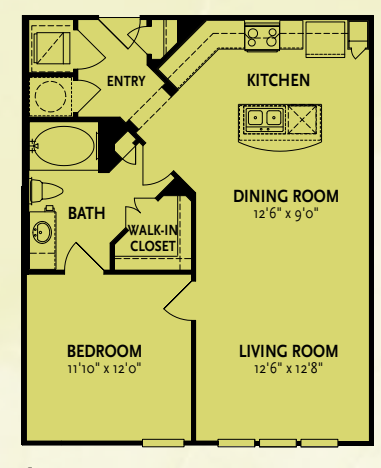
* Handicap Accessible Unit + Unit Variation for Second Floor



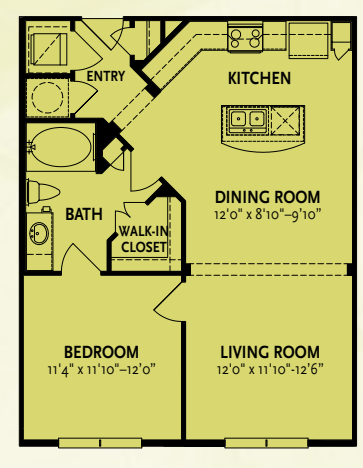
DESTINY
709 SQ. FT. WITH BALCONY



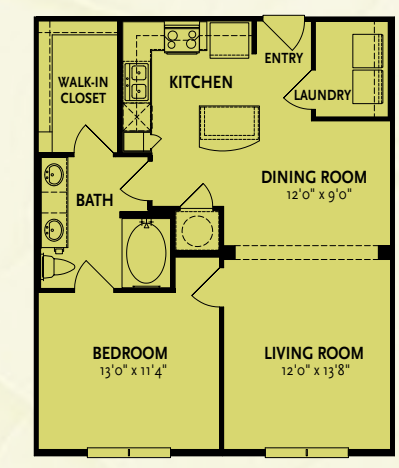
PROSPERITY
748 SQ. FT. WITH BALCONY



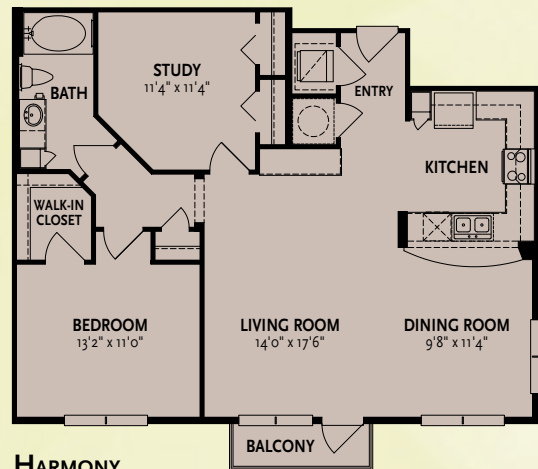
INFINITY
785 SQ. FT. (BALCONY OPTION)



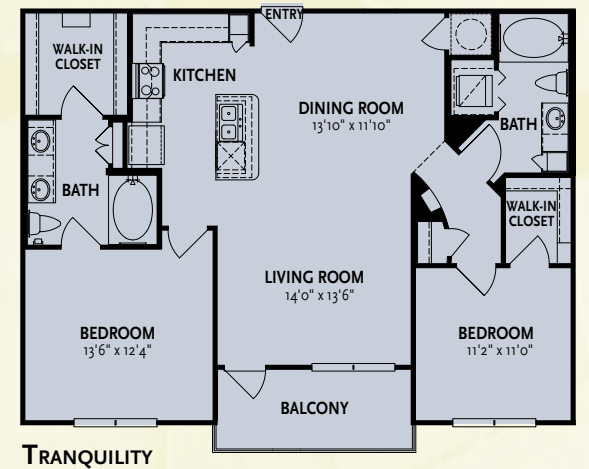
ETERNITY
754 SQ. FT.



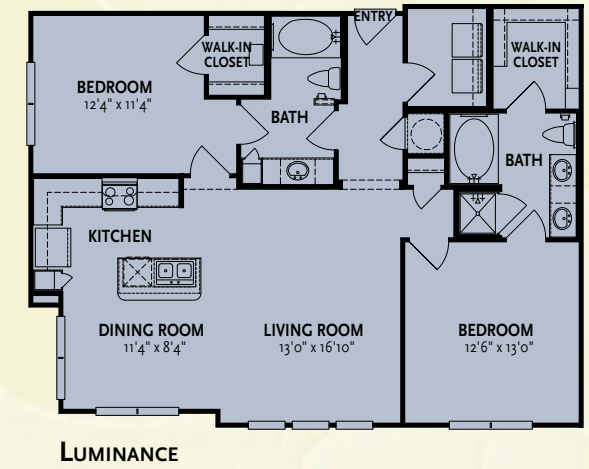
SERENITY
823 SQ. FT.



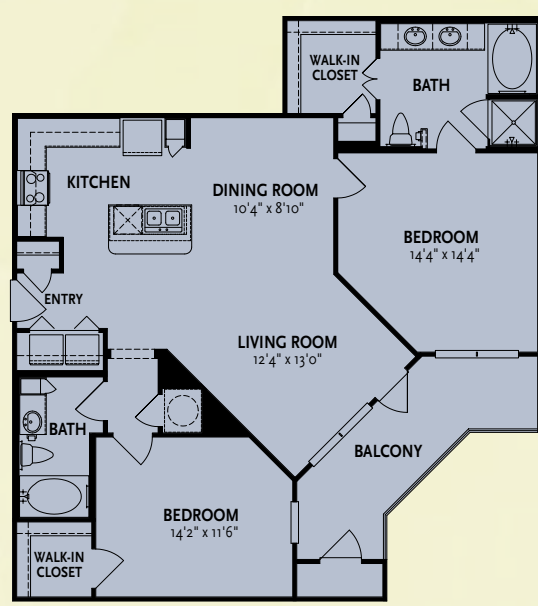
HARMONY
1074 SQ. FT. WITH BALCONY



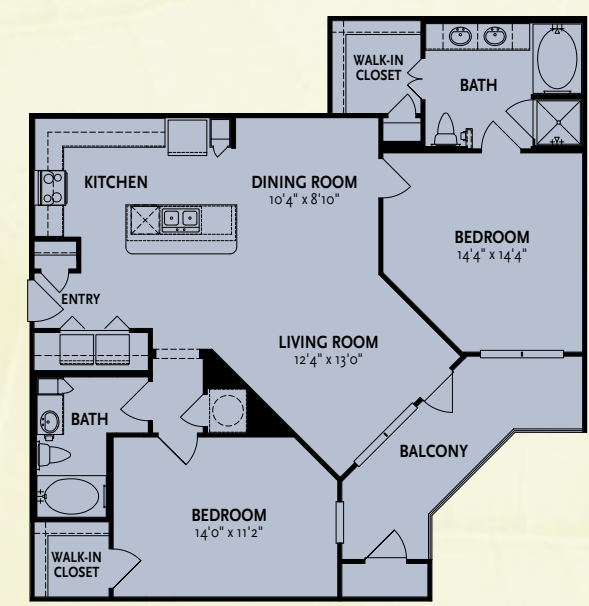
TRANQUILITY
1116-1144 SQ. FT. WITH BALCONY



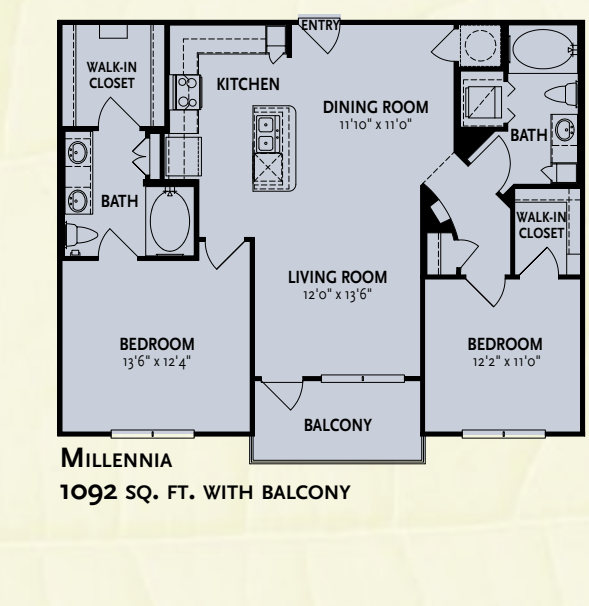
LUMINANCE
1176 SQ. FT.



RADIANCE
1202 SQ. FT. WITH BALCONY



PEACE
1228-1272 SQ. FT. WITH BALCONY



MILLENNIA
1092 SQ. FT. WITH BALCONY

FLOORPLANS NOT TO SCALE.

AMENITIES

IMPECCABLE LOCATION

- 10 minutes to Downtown
- 5 minutes to The Medical Center
- 10 minutes to The Galleria
- 2 minutes to Highland Village
- 3 minutes to Rice Village
- Walking Distance to Greenway Plaza and the Lakewood Church Campus
- Near Fine Dining and Upscale Shopping
- Convenient Access to Hwy 59 and both airports

PROPERTY FEATURES

- Art Deco Lighting
- Gorgeous Modern Kitchens
 - CleanSteel™ Side-by-Side Refrigerators
 - Black Pearl Countertops
 - Black Slate Flooring
 - Contemporary Blonde Cabinets
 - Under Cabinet Lighting
- Designer Accent Wall
- Washer and Dryer in Every Home
- European Inspired Bathrooms
 - Contemporary Fixtures
 - Custom Finishes
- Ceiling Fans in Each Bedroom
- Inviting Patios/Balconies*
- Oversized Picture Windows*

URBAN LOFT FEATURES

- 13ft Ceilings
- 42-inch Plasma TV
- Stained Concrete Floors
- 8ft Doors Throughout
- Contemporary Blonde Cabinets
- Exposed Spiral Duct in Living Room

PENTHOUSE UNIT FEATURES

- 10ft ceilings
- 42-inch Plasma TV
- Wood Vinyl Plank Flooring
- 8ft Doors Throughout
- Contemporary Blonde Cabinets
- Exposed Spiral Duct in Living Room

SUPERIOR LIVING

- Demonstration Kitchen with Classes by a Professional Chef
- Gourmet Food and Wine Tasting Events
- 24 hour Athletic Center
- Invigorating Saunas with Locker Room
- Complimentary Tanning Capsule
- Intimate Social Gathering Areas
- Porte-Cochere for Easy Resident Drop Off/Pick Up
- Parking Garage with Remote Control Access and Freight Elevator

URBAN OASIS

- Tranquil Elevated Courtyards with an Ornamental Orange Grove, Reflection Areas and More
- Beautiful Pool Plaza surrounded in Elegant Landscaping with Mosaic Tile Wall, Sunning Ledge, Infinity Spa and Poolside Terrace
- Summer Kitchen with Seating for your Entertaining

HI-TECH LUXURY

- Resident Lounge Featuring a Gourmet Coffee Bar with Wireless Internet Access
- Hyperlink Internet Service Available

* SELECT UNITS

4100 Southwest Fwy Houston, Texas 77027

713.622.1666

www.themillennium.com



The Dinerstein Companies



The Millennium Greenway is committed to bold and dramatic action to conserve, preserve and protect our environment and natural resources as part of its comprehensive "green program".